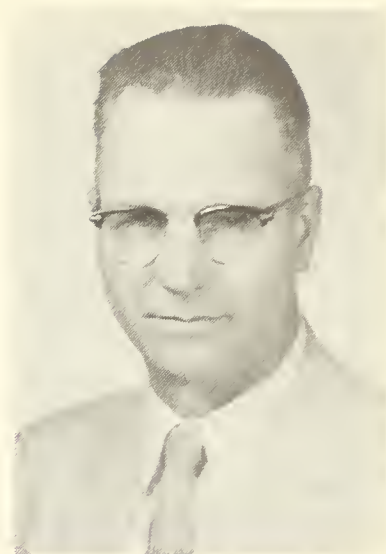
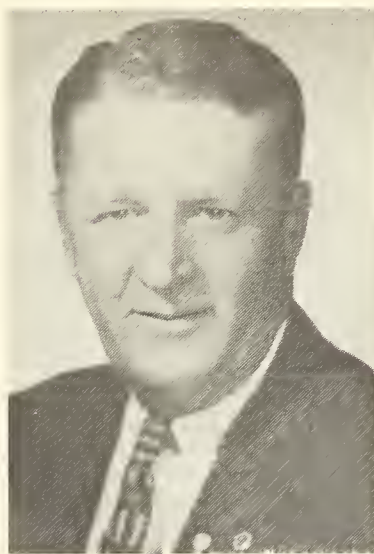


parents now res Montevideo Minn; m John P Scheltens of Raymond Minn Jul 7 1937; educ, pub schs Minn, Tchr Tng Dept Montevideo 1927-28, summer sch St Cloud Tchrs Coll 1935; rur sch tchr Raymond 1928-36, Sunburg Minn 1937; home-maker 1937---; pres Kandiyohi Ext Home Counc; mem Kandiyohi Co Pub Hlth Nursing Subcom; mem Sch Bldg Com; mem FB, Women's Com ibid; active in ARC, Ca, Com Chest, Polio campaigns; hobbies, sewing, knitting, gardening, flowers; Repub; chm Pastoral Rel Com & Comm on Evang & Mem of 1st Meth Ch Raymond; pres WSCS; Sun Sch Tchr adult class; sec Christian Soc Rel ibid; home Rt #2, Raymond.



KITTSO COUNTY

ANDREASEN, DINAL S.

Farmer

b Teien Twp Kittson Co Minn; s of Christian and Dina (Hansen); m Marguerite L Smith of St Peter Minn Feb 6 1919; ch, Dinal S, Joyce D (Mrs R Gangnath); 5 grandch; educ, pub schs Minn, att Hess Bus Coll, Agr Sch U of M; cashier Farmers & Merch State Bk Lancaster Minn 1910-15, Farmers State Bk Karlstad Minn 1915-23; farmer; ins ints; Kittson Co commr 1922---; mayor Karlstad 7 yrs; mem Kittson Co Welf Bd 20 yrs; mem Masonic Lodge; Repub; Luth; home and ofc, Donaldson.

FURAAS, CARL O.

Printer

b Lake Bronson Minn Sept 10 1895; s of Axel and Ida (Jonson); parents early settlers & homesteaders Kittson Co; m Mabel Larson of Lake Bronson Apr 1918; ch, Lorraine (decd), Dolores (Mrs Wendell R Olson); 1 grandch; educ, pub schs Minn; mgr Potato Whse Lake Bronson 1919-21; rur mailcarrier USPO Lake Bronson 1920---; publ'r Lake Bronson Budget 1932-49; job ptrr Lake Bronson 1932---; farm ints; p chm March of Dimes & Easter Seals; active USO & ARC drs; Mason; pres Kittson Co Sportsmen Club; mem Lake Bronson Rifle Club; mem & p post comdr Amer Leg; mem VFW; mem & 1st chef de gare Co 40 & 8; US Army WW 1, o/s; hobbies, collecting guns & antiques; deacon & trustee Luth Ch; home and ofc, Lake Bronson.

LANGEN, ODIN E. S.

Farmer

b Mpls Minn Jan 5; s of Joe and Selma (Almquist); m Lillian Clauson of Kennedy Minn Dec 23 1938; ch, Wayne, Lynden D, Lois A; educ, pub schs Minn, att Dunwoody Inst 1933-34; empl Farm Prog Admin Hallock Minn 1935-49; farm owner & oper 1935---; chm Co Farm Prod & Mktg Admin Hallock 1950-

51; pres Red River Farmers Club, Kennedy Community PTA; dir Kittson Co FB; chm Twp Bd, Sch Bd; twp chm USO; co chm Crippled Ch Soc; state repr Kittson Co 67th Dist 1951-58; hse minority ldr 1957; mem Lions, Masons; Luth; home, Kennedy.

NELSON, ROBERT CARL

Banker

b Hallock Minn Apr 25 1918; s of William and Ida (Teal); parents b & raised Crookston Minn; m Irene Larson of Hallock Aug 13 1940; ch, Duffy R, Daniel W, Robert C Jr; educ, pub schs Minn, att Macalester Coll 1935-37; sec treas Nelson-Booker Impl Co Hallock 1938-42; owner Nelson Impl Co Hallock 1942-49; exec vp NW State Bk Hallock 1949---; farm & livestock ints; mem Minn Bkrs Assn; councilmn 9th Cong Dist ibid 1956-58; p mem Minn Impl Dlrs Assn; mem Hallock City Council 1946-52; p sec Kittson Co Agr Soc; dir Kittson War Vets Hosp Bd; sec treas Hallock Scholarship Assn; mem AF & AM, RAM, Comdry, Kem Temple Shrine; p pres Stephen Shrine Club; dir Oak Ridge Country Club; mem Eagles, Amer Leg, Kittson Co Conserv Club; p pres Hallock Lions; US Navy WW 2, Aleutian Isls; hobbies, hunting, fishing, golf; Dem; elder & trustee Presby Ch; home and ofc, Hallock.

NORDINE, OSCAR MANUEL

Farmer

b Lancaster Minn June 7 1906; s of Ole M and Annie (Peterson); m Annie Johnson of Lancaster June 26 1935; ch, Ralph, Helen, Dorothy, JoAnne; educ, pub schs Minn, att Union Coml Coll 1924-26; farmer; part time FU ins agt past 8 yrs; REA promoter Kittson, Marshall & Polk Cos; mem Bd of Dir REA 1951---; mem Rur Sch Bd 9 yrs; mem Co Sch Re-org Com 2 yrs; clk Indep Cons Sch Dist 6 Bd 1950-57; twp assessor 14 yrs; active in fund drives; loc & co FU

orgnr since 1942; p pres loc FU; pres Co FU 1952-57; mem Bd of Dir & Exec Com of Minn FU; hobbies, woodworking, fishing; DFL; Luth; pres & sec Luth Bro-hd; home and ofc, Lancaster.

PETERSEN, WILLIAM LEROY

Lawyer

b Verndale Minn Aug 25 1882; s of Fred and Lydia (King); m Esther A Lindquist of Staples Minn Dec 29 1910; ch, Esther (Mrs J C Haas), Katherine (Mrs Orval A Lund), Carley (Mrs Robert P Engwall); 8 grandch; educ, pub schs Minn, att St Cloud Norm Sch, U of M LLB 1909; pub sch prin Watertown Minn 1903-06; lawyer Lancaster Minn 1909---; dir NW State Bk Hallock Minn; mem Minn Bar Assn Bd of Gvs 1945; senator Minn Legis 1931-35; mem Masonic Lodge; worshipful master ibid; mem Scot Rite, Kem Temple Shrine; Repub; home and ofc, Lancaster.

WARD, LAURENCE CURTIS

Farmer

b McArthur ND Jul 6 1908; s of Walter and Nellie (Pritchard); m Grace Finney of St Vincent Minn Dec 23 1933; educ, pub schs Minn, att NW Sch of Agr Crookston Minn, U of ND; farmer St Vincent Twp Minn 1928---; sec treas St Vincent Elev Co, Kittson Co Locker Sys; vp PKM Elec Coop; pres Joe River Tel Assn; sec St Vincent Union Indus Assn; dir Kittson Co Serv Assn; pres Cp FB, War Vets Meml Hosp, Co Ext Com; twp assessor; vp 4-H club; chm Co 4-H Clubs; pres Joe River Farmers Club; clk N Star Indep Ch; home, St Vincent.

YOUNGGREN, RUTH IRENE

Educator

b Hallock Minn Feb 19 1898; d of Oscar and Mulvina (Berg) Younggren; father sheriff Kittson Co (before co divided); educ, pub schs Minn, att Moorhead State Tchrs Coll 1921, Bemidji State Tchrs Coll



Assoc in Educ 1954; rur sch tchr Kittson Co Minn 1924-41; Kittson Co supt of schs Hallock 1942---; pub sch tchr Karlstad Minn 1955---; mem NEA, MEA; pres Hallock PTA; Exceptional Ch chm Minn Cong PTA; mem Ca Bd; co campaign chm Minn Div Amer Ca Soc p 8 yrs; pres Kittson Co TB Assn; orgnr Kittson Co Blood Bk; hobbies, tchg, flower growing, community work; Dem; elder & p chm Bd of Trustees Presby Ch; home and ofc, Hallock.

KOOCHICHING COUNTY

ABBOTT, MARK MOORE

Lawyer

b Watkins Minn Jul 12 1894; s of I M and Caroline (Cole); m Esther V Hendrickson of St Ansgar Ia Jul 20 1944; educ, pub schs Minn, U of M Coll of Agr BS 1916, U of M Coll of Law LLB 1928; Gamma Sigma Delta; agr dir Indep Sch Dist 4 International Falls Minn 1916-18; co agr agt Koochiching Co Internat Falls 1918-25; asst counsel Legal Aid Soc Mpls 1928-29; munic judge City of Internat Falls 1947---; US ct commr US Dist Ct Internat Falls 1947-57; pres Co Bar Assn; p pres Minn Co Agts Assn; p pres Internat Falls C of C; p pres Co ARC 14 yrs; pres Sal Army; p dir BSA; hobby, home grounds improv; Repub; deacon & p clk Congreg Ch; home 1010 2nd St; ofc J C Penney Bldg, International Falls.

ALICH, DELVINA

Homemaker

b Hibbing Minn May 7 1897; d of George and Oville (Barnaby) St Lawrence; m John J Alich of Farmington Minn June 9 1921; ch, George E, Marianne (Mrs Reed Christensen), Pauline (Mrs John Steinmetz), Sylvia (Mrs Harvey Engbretson), Agnes (Sr Mary Andrew OSB), Margaret (Mrs Kenneth Korauda), John Jr; educ, pub schs Minn, tchrs tng Univ Farm 1914-15; tchr rur sch

central Minn 1914-17, Border Minn 1917-19, Birchdale Minn 1919-20, Indus Sch 1920-21; twp treas 1 term; active ARC, Liberty & War Bond Drives; 4-H ldr 2 yrs; home & com chm Loc & Co FB; pres Cath Ladies Aid Soc; home, Border Rt, Clementson.

AMIDON, GEORGE BRIGGS

Forester

b Houston Minn Nov 30 1910; s of Edmund P and Julia Mabel (Briggs); parents Minn pioneers; m Jenny Erma Teeters of St Paul Minn Feb 26 1932; ch, Judith M (Mrs R L Dougherty), Gillett K, James S; educ, pub schs Minn, U of M BS 1936; Alpha Zeta; timber estimator Lake States Forest Expt Sta St Paul 1934-35; timber appraiser Minn Div of Forestry St Paul 1937-42; forest economist Lake States Forest Expt Sta St Paul 1942-44; dir of woodlands Minn & Ont Paper Co Mpls Minn loc at International Falls Minn 1944---; sec treas & chm loc sect Soc of Amer Foresters; vp & dir Amer Pulpwood Assn; mem Can Inst of Forestry, Forest Indus Com, Inst of Agr Adv Com U of M; mem Rotary; hobbies, sports, gardening; deacon, mem Bd of Trustees & Bldg Com Congreg Ch; home 905 Riverside Dr; ofc Minn & Ont Paper Co, International Falls.

ANDERSON, CHARLES ALBERT

Agriculturalist

b Hastings Minn May 9 1892; s of Hans and Cecelia; m Millie E Johnson of Rosemount Minn June 11 1918; ch, Douglas G, Stanton H, Charles A, Carol M, Dale E, Jack B; 4 grandch; educ, pub schs Minn, U of M BS 1916, 2 yrs on MS; Sigma Delta Chi; hs voc agr instr Sandstone Minn 1919, Internat Falls Minn 1919-23; mgr milk plant Milk Producers Assn Internat Falls 1923-24; hs voc agr instr Littlefork Minn 1924-43; co supt of schools Internat Falls 1943-45; co agr supvr Internat Falls & asst state supvr voc agr St Paul 1945-56; asst state supvr voc agr 1956---; oper greenhouse; sec treas Koochiching Co Poultry Assn, Rainy River Potato Whse Assn; pres Minn Voc Assn; mem Amer Voc Assn, Amer Fed Tchrs, Minn Soc Study of Educ; agr chm Nat Assn State Approval Agcy; mayor 3 yrs; chm Co Resource Com; vp Sate Keep Minn Green; co chm ibid; pres Co Fair 25 yrs; pres Minn Fed Co Fairs, Co Exhibs Minn State Fair; chm Co ARC, Co TB Mobile Unit; mem Co Hist Soc, Minn Alumni Assn, Masonic Lodge; comdr Amer Leg; chm Ch Welf ibid; vice comdr 8th Dist Amer Leg; att Ofcrs Sch USN WW 1; auth articles publ in farm journals; promoter Smokey Bear Statue; hobbies, conserv, gardening, fishing, hunting; mem Free Ch; home and ofc, Littlefork.

ANDERSON, PAUL ALBERT

Newspaper Publisher

b Maple Plain Minn Aug 24 1907; s of August and Mathilda (Andrell); m Helen A Tibbetts of Ft Frances Ont Can Feb 17 1940; ch, Paul Alan, Michael Hugh; educ, pub schs Minn, att U of M 1929-33; asst supt United Chautauquas Des Moines Ia summers 1926-30; reporter & ad man Minnetonka Herald Wayzata Minn part time 1931-34; reporter & city edit Daily Journ International Falls Minn 1934-35; edit ibid 1935-43; publ & edit ibid 1943---; mem Sigma Delta Chi; mem & p pres Minn Assoc Press; dir Falls C of C, Koochiching Com Chest, Koochiching Pub Hlth Nursing Bd; mem & p pres Falls Rotary; mem AF & AM, Elks; hobbies, woodworking, fishing, reading; Repub; trustee 1st Luth Ch 1953---; home 421 7th St; ofc Daily Journ, International Falls.

BARTKOWSKI, JOSEPH JOHN

Fire and Safety Inspector

b Kiel Poland Mar 27 1906; s of Andrew and Anna (Glowack); m Julia Ann Wietecha of International Falls Minn Jul 16 1932; ch, JoAnne; educ, pub schs ND; fire & safety insp Minn & Ont Paper Co Internat Falls 1926---; mem City Council as alderman & mayor 1953---; mem Vets of Safety, Amer Leg; US Army Med Corps WW 2; hobbies, fishing, hunting, carpentry; Cath; home 509 8th Ave, International Falls.

BOECKH, FREDERICK EDWARD

Business Executive

b Lansing Ia Sept 1 1902; s of Julius and Wilhelmina (Wilken); m Vella K Bartheld of Starkweather ND Aug 25 1930; ch, Katherine J; educ, pub schs Ia, Ia State Coll BS in Forestry 1928; Sigma Alpha Epsilon, Alpha Zeta; forester & timber supt Burlington Basket Co Burlington Ia 1928-35; asst conserv US Forest Serv Des Moines & Milwaukee 1935-37; asst gen supt Insulite Div Minn & Ont Paper Co Internat Falls Minn 1937-42; gen supt ibid 1942-49; prod mgr ibid 1949-54; asst gen mgr Falls Div Minn & Ont Paper Co International Falls 1954---; mem Soc of Amer Foresters; Sub Sect chm ibid; mem Insulation Bd Inst; chm Prod Com ibid; mem Tech Assn, Pulp & Paper Indus; dir Mando Supvrs Club; dir C of C; sec Charter Comm; dist chm BSA; assoc guardian Jobs Daughters; mem Masons, Blue Lodge, Chapt, Comdry, Shrine, Elks; dir Rotary; cited for merit serv to forestry & conserv by Ia State Coll Forestry Sch 1954; hobbies, fishing, canoeing, curling; Repub; sr warden Episc Ch; home 1015 2nd St; ofc Minn & Ont Paper Co, International Falls.

BRAY, CLAYTON WILLIAM

Educator

b Mauston Wis Mar 26 1899; s of